



moulinex AD560120 Mincer La Moulinette 800W User Manual

[Home](#) » [moulinex](#) » moulinex AD560120 Mincer La Moulinette 800W User Manual 

Contents

- [1 moulinex AD560120 Mincer La Moulinette 800W](#)
- [2 DESCRIPTION](#)
- [3 SAFETY INSTRUCTIONS](#)
- [4 STARTING UP](#)
- [5 USEFUL TIPS](#)
- [6 OPERATION](#)
- [7 CLEANING](#)
- [8 Documents / Resources](#)
 - [8.1 References](#)
- [9 Related Posts](#)

Moulinex[®]

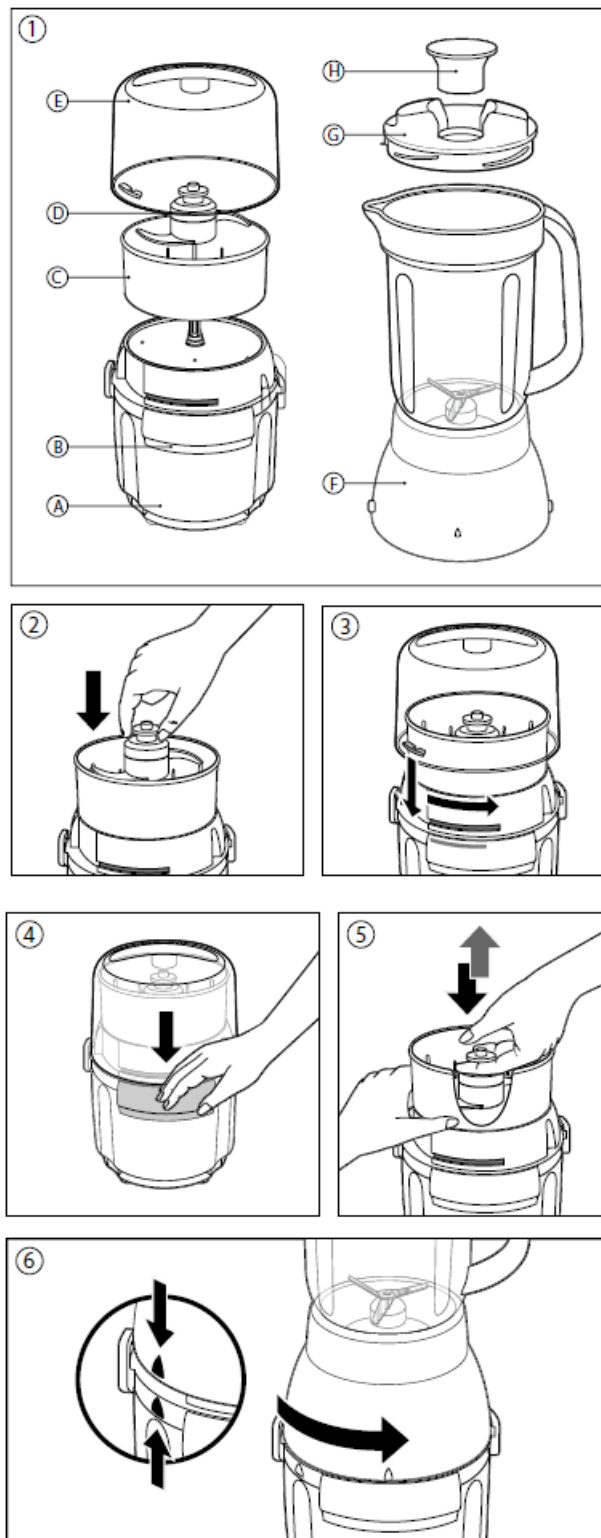
moulinex AD560120 Mincer La Moulinette 800W



The Moulinette model you have chosen is part of an intelligent, reliable, high-performance line of products designed to make life easier. Let's get to know the appliance together, so you can enjoy using it and get the most out of it.

DESCRIPTION

- A Motor base
- B Control button
- C Chopping bowl
- D Removable blade
- E Lid
- F Blender jug
- G Blender lid
- H Cap
- I Integrated blade



SAFETY INSTRUCTIONS

Please read the instructions for use carefully before using your appliance for the first time and retain them for future reference: the manufacturer cannot accept any liability for non compliant appliance use.

- Do not use the appliance if it has been dropped and there is visible damage to it (e.g. the protection panel), or if it fails to function normally. In this case, it must be sent to an approved service centre.
- This appliance is not intended for use by persons (including children) with reduced physical, sensory or mental capacities, or lack of experience and knowledge, unless they have been given supervision or instruction concerning use of the appliance by a person responsible for their safety.

- Children should be supervised to ensure that they do not play with the appliance.
- Do not use the appliance if the power cord or plug is damaged. The power cord must be replaced by the manufacturer, its aftersales service or similarly qualified persons in order to avoid danger.
 - Switch off the appliance and disconnect from supply before changing accessories or approaching parts that move in use.
 - Caution: you may injure yourself if you use the appliance incorrectly.
 - When emptying the bowls, assembling and disassembling the accessories, and cleaning, handle the chopping knife, with care : it is extremely sharp.
- The chopping knife is to be removed by its drive before emptying the contents from the bowl.
- Be careful if hot liquid is poured into the food processor or blender as it can be ejected out of the appliance due to a sudden steaming.
- Your appliance is for domestic culinary use only (for use inside the home only), and at an altitude below 2000m.
- It has not been designed to be used in the following circumstances, which are not cover by the warranty: in kitchen areas reserved for staff in shops, offices and other professional environments, on farms, by clients of hotels, motels and other residential environments and in guest rooms or similar accommodation.
 - Refer to the instructions when assembling and mounting the accessories on the appliance, for cleaning and maintenance and for setting the functions on your appliance.
- **WARNING** : Always operate the blender with the lid in position as indicated in the instructions.
- This appliance may be used by persons with reduced physical, sensory or mental capabilities, or whose experience or knowledge is not sufficient, provided they are supervised or have received instruction to use the device safely and understand the danger.

EUROPEAN MARKETS

- Always disconnect the appliance from the supply if it is left unattended and before assembling, disassembling or cleaning (even in case of power outage).
 - This appliance shall not be used by children. Keep the appliance and its cord out of reach of children.
 - This appliance may be used by persons with reduced physical, sensory or mental capabilities, or whose experience or knowledge is not sufficient, provided they are supervised or have received instruction to use the device safely and understand the dangers.
 - The grater can be used by children aged from 8 years and above if they have been given supervision or instruction concerning use of the appliance in a safe way and if they understand the hazards involved.
- Cleaning and user maintenance shall not be made by children unless they are aged from 8 years and above and supervised. Keep the appliance and its cord out of reach of children aged less than 8 years.

CHOPPING FUNCTION

- The powerful, large-capacity Moulinette is quick, efficient and easy to clean. In a few seconds, it can chop up:
 - parsley, garlic, onions, herbs,
 - raw and cooked meat,
 - ham, hard-boiled eggs
 - walnuts, hazelnuts, almonds, rusks, cheese, etc.



STARTING UP

- Place the motor base (A) on a table. Do not plug in your Moulinette.
- Place the chopping bowl (C) on the motor base (A). Place the blade (D) on the central shaft inside the bowl, pressing on the white part of the blade until you hear a click which locks it into place. (diagram 2). Caution: the blades are sharp. Place the cut-up food in the bowl.
- Put the lid (E) on the bowl (C) and lock it in place by turning it anti-clockwise (diagram 3). You can now plug in your Moulinette.
- Press the control button (B). The Moulinette starts up immediately (diagram 4). To stop it, release the button. The appliance stops quickly. Never remove the lid before the blade has come to a full stop.
- Unplug the appliance after each operation and before cleaning it. Unlock the lid by turning it clockwise then lifting it.
- To remove the blade (D), first hold the bowl (C) with one hand and press on the blade button with the thumb (diagram 5). Remove the blade (D) from inside the bowl (C) before using your chopped-up food.

USEFUL TIPS

- Important: when chopping, you will get better results through multiple presses.
- Press the control button for the required length of time depending on how fine the food is to be chopped.
- To get a fine, even chop, scrape the food off the sides with a spatula and spread it in the bowl.
- After extensive use, the blade loses its edge. Don't hesitate to change it.

1. Let the appliance cool down for 1 minute after each use.
2. Do not run the appliance empty.

3. Recommended times and quantities:

INGREDIENTS	MAX. QUANTITY	MAX. TIME
Parsley	20 g	3 s
Onions/Shallots	150 g	10 s
Garlic	60 g	8 s
Biscuits	50 g	15 s
Almonds	200 g	8 s
Hazelnuts	120 g	12 s
Cheese	150 g	5 s
Hard-boiled eggs	200 g	6 s
Tender Meat	200 g	5 s
Hard Meat	200 g	5 s

- Very hard meat (shoulder of lamb): Wait 2 minutes between each cycle
- Note: for better performance use mentioned time in pulses(each time 2 sec)
- Chunks must not be larger than 4 x 4 cm.
- For meat, chunks must not be larger than 2 x 2 cm.
- When chopping parsley, the attachment must be removed

BLENDING FUNCTION

- The blender jug purées fruits and vegetables. It mixes, beats and blends sauces and mixtures. It makes cold drinks and soups. It cannot whip up egg whites nor make mashed potatoes.
- The lid (G) locks onto the bowl (F).
- The hatch in the middle of the lid (G) enables you to add small quantities of food or liquids during processing.
- Do not run the appliance empty or solely with solid ingredients. Always add milk, water, etc., depending on the recipe.
- When filling up the blender jug (F) do not exceed the “MAX” level indicated on the bowl (750ml).
- Never blend or pour into the blender jug (F) any liquids or foods whose temperature is above 80° C (175° F).
- Because of the high speed of the motor, do not operate the appliance for more than 45 seconds. If necessary, let the appliance rest for one minute before repeating the operation.

OPERATION

- Place the motor base (A) on a table.
- Place the ingredients you want to blend into the jug (F). Don't forget to put the liquids in first. All operations must be carried out with the blender jug on the table, never on the MOTOR BASE.
- Put the lid on and lock it into place (G). (Never place the blender jug on the motor base without its lid.). Make sure the cap is locked into place (H).

To fit the blender jug onto the motor base of the Moulinette, line up the sign on the front of the blender jug with the sign at the top of the Moulinette motor base, then swivel the blender jug anti-clockwise. (diagram 6).

- Plug in the appliance and start it up by pressing the control button (B).
- To stop the appliance, release the control button.
- Never put your fingers or any object in the blender jug (F) when the appliance is operating.

- Never run the blender without its lid (G) and cap (H) locked into place.
- Only remove the blender jug when the appliance has come to a full stop.

CLEANING

- To clean the motor base (A), use a damp sponge (never put it under running water).
- All other accessories (blades (D and I), bowl (C), and lid (E) can go into the dishwasher.
- To clean the blender jug (F), pour a glass of hot water in it with a few drops of washing-up liquid. Put the lid (G) back on and operate the blender for a few seconds. Empty it out, rinse it and let it dry upside down.

WHAT TO DO IF YOUR APPLIANCE DOESN'T WORK?

- First, check the connection.
- If you have carefully followed all of these instructions and your appliance still doesn't

Let's all help protect the environment!

Your appliance contains valuable materials which can be recovered or recycled.

Take it to a local civic waste collection point.

Documents / Resources

 The image shows the Moulinex logo at the top left. Below it is a photograph of the Moulinex AD560120 Mincer La Moulinette 800W blender, including the motor base, the blending jug, and the lid. The website address www.moulinex.com is visible at the bottom of the image.	<p>moulinex AD560120 Mincer La Moulinette 800W [pdf] User Manual AD560120, Mincer La Moulinette 800W</p>
--	--

References

-  moulinex.com